

2025

CENTER FOR KOREAN LANGUAGE & CULTURE
HANKUK UNIVERSITY OF FOREIGN STUDIES



한국외국어대학교
한국어문화교육원
CENTER FOR KOREAN LANGUAGE & CULTURE
HANKUK UNIVERSITY OF FOREIGN STUDIES



CONTENTS

I. Center for Korean Language and Culture 4

II. Course Overviews 5

- Regular Course
 - Interpretation and Translation Course
 - Short-term Course
 - Special Course
-

III. Admissions 14

- Admission procedures
 - Eligibility
 - Required Documents
 - Tuition Fee
 - Contacts
-

IV. Living Guide 20

- Student Activities
- Scholarships
- Housing
- Other Support

I. Center for Korean Language and Culture

The Center for Korean Language and Culture is an affiliate of Hankuk University of Foreign Studies (HUFS), the cradle of foreign language education, and is based on the Foreign Language Training Institute established in 1974. In 2006, the institute was reborn as the Center for Korean Language and Culture (CKLC) with the purpose of raising the status of the Korean language in the world and providing more high-quality and professional Korean language education. Over the past 30 years, many foreigners and overseas Koreans who want to learn Korean language and culture have passed through the CKLC, and more than 4,000 students are graduated every year.

- Multinational classes with students from over 100 countries around the world
- Professional instructors with a wide range of foreign language skills
- Teaching tailored to the learner's level
- Use of level-specific textbooks developed by CKLC
- Practical Korean language education centered on communication
- Various Korean cultural experience activities

International Education Quality Assurance System

IEQAS: as of 2023

Hankuk University of Foreign Studies has been certified for its educational internationalization capabilities for degree programs and language training courses, which has led to benefits such as visa simplification.

In particular, CKLC has met all of the Ministry of Education's evaluation standards, including illegal immigration rate, internationalization infrastructure, and academic and living support for foreign students, thereby highlighting its status as a top language institution in Korea.



II. Course Overviews

Korean Language Courses

Category	Regular Course	Interpretation & Translation (IT) Course	Short-term Course
Semester	10 weeks (Spring, Summer, Fall, Winter)	10 weeks (Spring, Fall - IT I / Summer, Winter -IT II)	4 weeks (Spring, Summer)
Total class hours	200 hours	200 hours	80 hours
Class days	Monday through Friday (5 days a week)	Monday through Friday (5 days a week)	Monday through Friday (5 days a week)
Class time	Morning: 09:00-12:50 (4 hours) Afternoon: 13:30-17:20 (4 hours)	13:30-17:20 (4 hours)	09:00-12:50 (4 hours)
Venue	HUFS Seoul Campus (Seoul) HUFS Global Campus (Yongin) * Exchange student only classes	HUFS Seoul Campus (Seoul)	HUFS Seoul Campus (Seoul)
Completion Requirements	<ul style="list-style-type: none"> • 60+ for each subject, • 70+ overall averages • Less than 40 hours absent 	<ul style="list-style-type: none"> • 70+ for each subject • Less than 40 hours absent 	<ul style="list-style-type: none"> • 60+ for each subject • 70+ overall averages • Less than 17 hours absent

※ The above program details are subject to change for better training.
(For the latest information: www.korean.ac.kr)

1 Regular Course

01 Course Overview

The Regular Course is a 10-week course that teaches Korean language and culture. It is a practical, communication-oriented course that will help students improve their Korean language skills. Students can study Korean with other students from various countries and experience Korean culture.

Who	Program	Schedule	Placement Test
Foreigners who want to learn Korean intensively for 3 months or more (for studying abroad, working, or adjusting to life in Korea)	Korean language education centered on reading, listening, writing, and speaking	4 semesters per year (Spring, Summer, Fall, Winter) ※ Students can enroll in the semester of their choice Hours 200 hours/10 weeks per semester (4 hours/day, 5 days/week)	After a level test consisting of written test and 1:1 interview, students are assigned to an appropriate class. Upon graduation from level 5 to level 6, students receive a certificate signed by the President of HUFS and a souvenir.

02 Educational Goals and Level-Specific Content

Beginner

Level 1

You can build the foundations of the Korean language about speaking, listening, reading and writing skills using basic grammar and sentence structures. You will learn expressions related to personal and familiar topics such as self-introduction, family, hobbies, weather, etc.

Level 2

You can practice basic conversation focusing on speaking skills and compose complex sentences stably and communicate naturally in real situations through various role plays. You will learn writing component focuses on grammatical accuracy, vocabulary expansion through readings and conversations.

Intermediate

Level 3

You can expand basic vocabulary and grammar from active participation through conversations and oral presentations, mastery of both honorific and informal speech. You also have various opportunities to speak with native Koreans through activities, such as interviews and surveys.

Level 4

You can practice specialized terms and expressions used in various fields of Korean society. It provides more discussion-based classes and the opportunities to familiarize with more practical Korean by watching TV dramas, discussing commercials and reading newspaper articles.

Advanced

Level 5

It is transitional course between intermediate and advanced level. You can develop advanced expression and comprehension skills based on what you learned at the beginner and intermediate levels. You will study Korean politics, economy, society and culture and learn the differences between written and spoken Korean, and the appropriate use of official and unofficial expressions.

Level 6

You can review of Korean grammar, speaking, listening, reading and writing. You will be able to convey your thoughts logically in Korean and communicate in public situations. You will study Korean history, literature, culture, economy, politics, etc. through in-depth discussions, research and presentations on individually-selected topics.

03 Timetable

Level 3~6 (Intermediate/Advanced)		Level 1~2 (Beginner)	
1st period	09:00~09:50	5th period	13:30~14:20
2nd period	10:00~10:50	6th period	14:30~15:20
3rd period	11:10~12:00	7th period	15:30~16:20
4th period	12:10~13:00	8th period	16:30~17:20

※ Class times are subject to change depending on the situation.

Interpretation & Translation (IT) Course

Level 7

Based on fluent Korean communication abilities, you will develop interpreting and translating skills in your native language and Korean. In-depth studies regarding the individual subject of Korean language and Korean studies encompassing politics, economy, society, and culture will be held. You will have actual interpretation and translation practice in a variety of fields.





Entrance Ceremony

I participated in the entrance ceremony on the first day of school. I met and greeted my classmates and teachers who would be learning Korean together for the next 10 weeks.

I can't wait to get to know my friends, eat with them, and travel around Seoul.



Midterm Exam

Today I took my midterm exam. For the speaking test, I discussed environmental issues which I prepared hard. To celebrate the end of the exam, my classmates and I went to eat tteokbokki near the school.

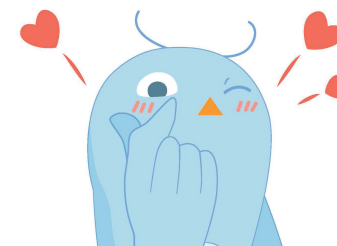
Classes

Today, I learned about Korean traditional culture. The biggest holidays in Korea are Lunar New Year and Chuseok. I also learned about tteokguk and galbi. I can't wait to try them. I'm going to go back to my dorm and review the grammar and expressions I learned today.



Mentoring

I went to Dongdaemun with my Korean mentor friend and we did some shopping. My friend told me about the latest fashion trends in Korea. Next time, we'll go to the Han River because they say the ramen there is so good.



Supplemental Learning

I booked a K-Pop lyrics class in the morning. We learned the expressions in the lyrics and sang along together. I like the song better because I know the lyrics.



Final Exam

I took a final exam to wrap up the semester's learning, and I think I did better on the final than the midterm. It feels good. Tomorrow the class is watching a movie. I'll have to bring a snack to share.

Cultural Activity

I participated in a Cultural Expo. There were booths set up for each country and traditional costumes were displayed. We tried on clothes, ate traditional food, and watched a performance organized by the students, and everyone danced well.



Completion Ceremony

The semester is already over. I got my certificate and took a picture with my teacher and classmates. It was great to see the level 6 students in wearing gowns. I'm going to try to get a scholarship next semester.



2 Interpretation & Translation (IT) Course

01 Course Overview

“The best Korean Interpretation and Translation course for foreigners”

- Cultivate interpretation and translation skills between native language and Korean based on proficient Korean communication skills
- Lectures by interpreters and translators who graduated from HUFs GSIT
- Language-specific interpreting and translating practice with structured, hands-on instruction

Who	Program	Schedule	Hours
Foreigners who want to learn Korean Interpretation and Translation ※ Only those who pass the pre-evaluation (written test and 1:1 interview) can take the course.	Advanced Korean language skills and interpretation training	4 semesters per year IT I (Spring/Fall) IT II (Summer/Winter) ※ Students can enroll in the semester of their choice	200 hours/10 weeks per semester (4 hours/day, 5days/week)

※ I/II Courses differ only in terms of lesson content. The order in which you take is irrelevant.

※ Students who take both I/II courses will receive a certificate of completion signed on by the President of HUFs. Students who take only one course will receive a certificate of completion signed by the director of the CKLC.

02 Course Curriculum

Korean Language Area

Korean Enhancement	<ul style="list-style-type: none"> - Students will learn advanced Korean vocabulary, expressions and grammar according to academic topics from the perspective of interpretation and translation. - Improve Korean interpretation and translation skills by correcting Korean errors and learning Korean expressions appropriate for the situation.
Media Korean	<ul style="list-style-type: none"> - Use various media materials (news and newspapers, dramas, movies, advertisements, etc.) to develop an overall understanding of Korean society and Korean language skills.
Korean Sentences	<ul style="list-style-type: none"> - Practice writing Korean sentences at an advanced level.

Interpretation and Translation Area

Theory of Interpretation & Translation	<ul style="list-style-type: none"> - Understand the theory and content of interpretation and translation necessary to perform actual interpretation and translation work. - Based on an understanding of interpretation and translation theory, students will learn specific performance strategies that can be used in actual interpretation and translation situations.
Practicing Korean Interpretation & Translation	<ul style="list-style-type: none"> - Establish the foundation for translation/interpretation based on a basic understanding of translating/interpreting between native language and Korean. - Learn translation/interpretation methods through actual practice of accurately understanding and conveying the original text.

03 Timetable

	Level 7	Mon	Tue	Wed	Thu	Fri
5th period	13:30~14:20					
6th period	14:30~15:20	Korean Enhancement	Practicing Korean Interpretation & Translation (by language)	Korean Enhancement	Practicing Korean Interpretation & Translation (by language)	Theory of Interpretation & Translation
7th period	15:30~16:20	Media Korean		Media Korean		Korean Sentences
8th period	16:30~17:20					

※ Subjects for each day of the week may vary depending on language area and class.

※ Class times are subject to change depending on the situation.



3 Short-term Course

01 Course Overview

The short-term course consists of 4 weeks of Korean speaking, listening, reading and writing. In addition to cultivating language skills, the program offers weekly cultural experiences and special activities.

Who	Program	Schedule	Hours
Foreigners who want to learn Korean and experience Korean culture in a short period of time	Korean speaking, listening, reading and writing	2 semesters per year (Spring, Summer) ※ Students can enroll in the semester of their choice	80 hours/4 weeks per semester (4 hours × 5 days)

02 Timetable

Morning	
1st period	09:00~09:50
2nd period	10:00~10:50
3rd period	11:10~12:00
4th period	12:10~13:00

※ Class times are subject to change depending on the situation.

03 Cultural Activities

Week	Contents
1st week	Korean musical instruments
2nd week	Seal Making
3rd week	Nanta Performance
4th week	Taekwondo

※ The contents are subject to change.

4 Special Course

01 Course Overview

CKLC is entrusted with providing education on Korean language and culture to nationwide organizations such as government agencies, educational institutions, and companies. With our many years of expertise, we successfully execute out related national treasury projects annually. The content and structure of the special courses are provided as a customized to meet the needs and requests of the entrusting organizations and the learners.

02 Course Content

CKLC offers classes tailored to the requests of the commissioning institutions. Generally, Korean language classes are conducted based on Korean language and culture lessons. Additionally, special activities, such as Korean cultural experiences or student exchange programs, are held once or twice a week in the afternoon. Customized Korean language classes and cultural experience activities are provided according to the requests of the commissioning institutions.

Examples of Korean cultural experiences: Korean cuisine, Korean musical instruments, seal making, calligraphy, traditional crafts, tea ceremony, K-POP dance, Taekwondo, performance (watching Nanta, Musical Chef, drawing show, etc.), theme parks (Lotte World, Everland, Yongin Folk Village, etc).


※ Programs can also be customized after consultation.


03 Major Entrusting Organizations

CKLC has been consistently conducting programs requested by government agencies such as the Seoul Metropolitan Government, the Ministry of Justice, and the Ministry of Foreign Affairs, and foreign employees of companies such as Samsung, Daewoo, and Kookmin Bank, as well as programs requested by leading universities around the world.

Government and Private companies		Ministry of Justice, Ministry of Foreign Affairs, Korea International Cooperation Agency, Sejong Hakdang Foundation, National Institute for International Education, Samsung, Seoul Metropolitan Government, Incheon Metropolitan City, Association of Governors of Korean Provinces, Korea Foundation for International Culture Exchange, Emirates Nuclear Energy Corporation, Korea Health Industry Development Institute, Korea Meteorological Industry Promotion Institute, Weihai City (China), Hainan Province (China), etc.
	Korea	Korea Advanced Institute of Science and Technology (KAIST), Korea National University of Arts, Korea National Police University, Korean Foreign School Association, etc.
Educational Institutions	Japan	Tenri University, Sundai College of Business & Foreign Languages, Hosei University, University of Niigata Prefecture, Teikyo University, Osaka Gakuin University, etc.
	China	Beijing International Studies University, Xuedao Training School, etc.
	Thailand	Silpakorn University, Kasetsart University, Prince Songkla University, etc.
	Singapore	Ngee Ann Polytechnic, Poly Technic University, etc.
	United States, UAE	Kapiolani Community College, United Arab Emirates University, etc.

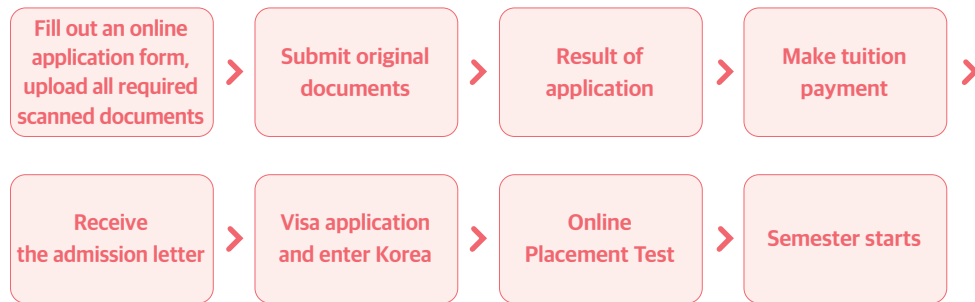
04 Contact

 Telephone +82-(0)2-2173-2610

 Email korean4@hufs.ac.kr

III. Admissions

1 Admission procedure



2 Eligibility

Open to anyone with a high school diploma or higher who wants to learn Korean language and culture.

※ High school pre-graduates are not eligible to apply

3 Required Documents

01 Regular Course

Designated countries and high risk countries of TB

China, Philippines, Uzbekistan, Thailand, Vietnam, Russia, Mongolia, India, Indonesia, Srilanka, Nepal, Pakistan, Bangladesh, Myanmar, Cambodia, Malaysia, Kyrgyzstan, East Timor, Laos, Kazakhstan, Ukraine, South Africa, Nigeria, Peru, Ethiopia, Democratic Republic of Congo, Kenya, Mozambique, Zimbabwe, Azerbaijan, Belarus, Republic of Moldova, Tajikistan, Angola, Papua New Guinea, Iran, Kyrgyzstan, Ghana, Egypt, Guinea, Mali, Uganda, Cameroon

Number	Document Submission	Remarks	Original	Copy
1	A Copy of Passport	Copy the photo page		○
2	Home Country ID	Front and back		○
3	Proof of Kinship	A. China : Family Register or Family Relationship Certificate B. Others : Family Relationship Certificate * If the original document was issued in a language other than Korean or English, a notarized translation with an apostille/consular confirmation is required.	○	
4	Graduation Certificate and Transcripts	A. China 1) General high school graduate or higher ① Certificate of Chinese Ministry of Education or Ministry of Education Online Academic Certificate (Set authentication validity to 6 months) ② School-issued diploma and transcript (copy) 2) Vocational high school graduate or higher ① Certificate of Chinese Ministry of Education or Ministry of Education Online Academic Certificate (Set authentication validity to 6 months) ② Diploma and transcript (copy) from school or Provincial Education Office * In absence of China's Ministry of Education certification, submit school- issued graduation and transcript originals, verified by Korean consulate * Korean or English translation notarization required 3) Graduates of technical and industrial high schools operated by the Ministry of Human Resources and Social Security of China ① Graduation certificate (certified by the Ministry of Human Resources and Social Security + verified by the Korean consulate) ② Transcript (copy)	○	

Number	Document Submission	Remarks	Original	Copy
4	Graduation Certificate and Transcripts	B. Vietnam Documents verified by the Korean consulate (Korean or English translation notarization required)	○	
		C. Mongolia, Uzbekistan Apostille-certified degree documents (Korean or English translation notarization required)		
		D. Others : (Choose 1 from ① ~ ②) ① Apostille verified degree documents ② Documents verified by Korean consulate in respective country (Korean or English translation notarization required)		
5	Bank Statement	* Balance certificate only in student's or parent's name is accepted. A. China : RMB 70,000 or more * Issued within 1 month of application date and deposited for over 6 months B. Uzbekistan : USD 10,000 or more * Issued within 1 month of application date and deposited for over 6 months, issued by a local Korean financial institution only C. Others : USD 10,000 or more * Issued within 1 month of application date and deposited for over 6 months * Balance certificate only in student's or parent's name is accepted. * Korean or English translation notarization required	○	
		Applicants with over two years gap since last graduation: Submit documents to verify the time period (e.g., certificate of employment, coursework, etc.) * Korean or English translation notarization required		
6	Gap Periods Proof			○

※ Documents written in languages other than Korean or English must be certified with a notarized translation.
 ※ We may request additional documents after our initial review.
 ※ Submitted documents will not be returned.

Undesignated countries

North America, EU countries, Japan, Hong Kong, Taiwan, etc.

Number	Document Submission	Remarks	Original	Copy
1	A Copy of Passport	Copy the photo page		○
2	Graduation Certificate and Transcripts	* Korean or English translation notarization required * Apostille or consular verification required	○	
3	Bank Statement	USD 10,000 or more * Issued within 1 month of application date * Balance certificate only in student's or parent's name is accepted. * Documents in languages other than Korean or English must be submitted with a notarized translation.	○	

※ We may request additional documents after our initial review.
 ※ Submitted documents will not be returned.



02 IT Course Required Documents

International freshman

Regular course documents + TOPIK (Korean Language Proficiency Test) Level 6 certificate

Domestic Transfers

Number	Document Submission	Remarks	Original	Copy
1	A Copy of Passport	Copy a photo page		○
2	Alien Registration Card	Front and back		○
3	Graduation Certificate and Transcripts	The same documents you submitted to your language institute * Upload scanned files only, no need to submit original documents during applicatio submission(original documents must be submitted to the immigration office).	○	○
4	Certificate of Enrollment and Transcripts	6th level and full semester transcripts from other universities	○	
5	TOPIK Transcripts	TOPIK transcript with a level 5 or higher		○
6	Bank Statement	USD 10,000 or more * Issued within 1 month of application date * Balance certificate only in student's or parent's name is accepted. * Documents in languages other than Korean or English must be submitted with a notarized translation.	○	

※ We may request additional documents after our initial review.

※ Submitted documents will not be returned.

※ Students must pass the pre-assessment after submitting an application and passing the documentation review to finalize their enrollment in the program.

03 Visa Notes

- Students who wish to participate in a Korean language course must apply for a training visa(Visa Status : D-4).
- Only students who have passed the screening and paid for tuition fee will be sent the necessary documents to apply for a visa.
- Each country may have different procedures for visas, so be sure to check.
- To change or extend your visa in South Korea, visit your local immigration office for guidance.

4 Tuition Fee (KRW)

Category	Application fee (non-refundable)	Tuition per Semester (incl. insurance)	Postal Surcharge for original acceptance letter
Regular Course	60,000	1,630,000	20,000 (on request)
IT Course	100,000	1,930,000	20,000 (on request)
Short-term Course		1,050,000 (excl. insurance)	
Special Course	Depends on training duration and number of students		

※ As of 2024

5 Contact

Category	China and Rest of Asia (excluding Japan and Central Asia)	Japan, Central Asia, All other countries
Telephone	+82-(0)2-2173-3385	+82-(0)2-2173-2307
Email	korean1@hufs.ac.kr	korean2@hufs.ac.kr
Address	(02450) Center for Korean Language and Culture, Room 101, Foreign Language Training and Testing Center, Hankuk University of Foreign Studies, 107 Imun-ro, Dongdaemun-gu, Seoul, Republic of Korea	
Application Website	https://hufsportal.hufs.ac.kr/cklc/apply.php	
CKLC Website	www.korean.ac.kr	

IV. Life guide

1 Student Activities

01 Cultural activities and events

CKLC helps trainees experience Korean culture through a variety of activities outside of class.



Culture Expo

The Culture Expo, held every spring semester at HUFS Seoul Campus, is an annual event where international students from various countries introduce their traditional foods, costumes, and cultures. Students can enjoy a parade of featuring peers dressed in traditional attire carrying their national flags, team performances, and various activities at country-specific booths.



Sports day

In the fall semester, we hold a sports competition. Through various games such as tug-of-war, ball rolling, board flipping, and three-legged races, students can develop teamwork and enjoy Korean culture. We also have various events, including group uniform redesign and prize drawings.



Cultural Activities

In addition to the Cultural Expo and sports competition, we offer a variety of programs to help students enjoy Korean culture in a fun way, such as visits to Lotte World, ice skating, sledding, attending performances, cooking, Taekwondo, and K-POP dance classes.

02 Mentoring and tutoring

The Korean Language Mentoring Program at HUFS pairs one Korean student with three to four international students, facilitating cultural exchange. Through mentoring, international students can improve their Korean language skills, learn tips for living in Korea, and create unforgettable memories by visiting tourist attractions with their mentors. Also, CKLC offer free supplementary classes for trainees who are at the beginner level of Korean. The contents of supplementary classes vary by semester. (e.g. K-POP Lyric classes, pronunciation practice, 1:1 homework helper)

2 Scholarships

01 Academic Scholarships

Scholarship	Recipients	Amount	Qualifications	Number
Top academic achievement	Regular / IT (Level 1~7)	Full tuition		
Second Highest Academic achievement	Regular Course (Level 1~6)	Half tuition	Average score + attendance rate	0
Second Highest Academic achievement	Interpretation & Translation Course (Level 7)	Half tuition		
Academic encouragement	Regular Course (Level 1~6)	Specified	Region of origin, average score, attendance rate, etc	0
Exemplary students	Regular / IT	Specified	Attitudes, personality, etc * recommended by teacher	0

02 Other Scholarships

Scholarship	Recipients	Amount	Qualifications	Number
CKLC Supporters	Regular / IT	Specified	Promotional Content Creation Activities * Applications open in Spring/Fall semesters	0
Alumni Scholarship I	Regular / IT	Up to 30% Tuition Reduction	- Current students of HUFS/Cyber HUFS - Employees and Family members of HUFS (direct relatives, spouses) * Submit relevant certificates	0
Alumni Scholarship II	Regular / IT	Up to 10% Tuition Reduction	- Graduates/completers of HUFS/Cyber HUFS * Submit relevant certificates	0

※ The number of recipients, amounts, and eligibility criteria may be subject to change.

※ For detailed information regarding scholarships, please refer to the CKLC website (www.korean.ac.kr).

03 HUFS Undergraduate Scholarships

Students who have registered in the Regular Course more than 2 semesters and have been admitted to the undergraduate program can receive the HUFS Undergraduate Scholarships.

Scholarship	Qualifications	Amount(KRW)	Number
Global Talent A	Those who have registered for two or more semesters in the Regular Course	1,700,000 (for the first semester)	All eligible students will receive the scholarship.
Global Talent B	Those who have registered for two or more semesters in the Regular Course and have acquired TOPIK 5+	Half of the undergraduate tuition fee (for one year)	

※ For more detailed information about undergraduate entrance scholarships, please refer to the Office of International Admissions and Management website(international.hufs.ac.kr)

3 Housing

For students enrolled in CKLC, we operate a dormitory conveniently located a 1-minute walk from the main gate of the university. We accept applications for dormitory residency approximately 2 months before the start of each semester. The number of available spots varies each semester, and only students who have been accepted and paid their tuition fees can apply. There is no limit to the number of semesters a student can reside in the dormitory; however, the possibility of extension may vary from semester to semester.

Global Hall (Dormitory)	
Address	Global Hall, 114 Imun-ro, Dongdaemun-gu, Seoul, Republic of Korea (02450)
Type	Double Room (1 room for 2 people)
Capacity	About 80 people
Location	1 minute walk from Hankuk University of Foreign Studies main entrance
Facilities	Single bed, Desk, Personal Locker, Mini Refrigerator, Internet Router, Card key System, Lounge, Laundry Room, Study Room, etc.

Accommodation Fees(as of 2024)

Category	Amount (KRW)
Residence Fee	1,372,000
Management Fee	198,000
Cleaning Fee	50,000
Deposits	100,000
Total	1,720,000

※ Based on 1 room for 2 people

※ For single rooms or short-term and special course accommodation, please inquire separately.

4 Other support



Academic Support

Library of HUFS

All trainees at the CKLC are issued a HUFS student mobile ID. Students can use school facilities such as the library and Wi-Fi just like undergraduate students at HUFS.



Learning Management System (LMS)

We utilize a specialized academic management system to manage our trainees' studies. Students can check their attendance and grades, re-register for the courses, apply for dormitory, check insurance status, and more on the LMS.



Stay Management

CKLC provides services for smooth visa issuance and stay for its students. We offer assistance for new applications and visa extensions, handling alien registration card issuance, without the need for students to personally visit immigration offices.



Healthcare Support

CKCL ensures the stable Korean study life of its students by enrolling them in group insurance. When visiting hospitals, students can pay medical expenses upfront and then claim insurance online. If students already have individual insurance, they do not need to enroll in the group insurance. Those staying in Korea for more than 6 months are required to enroll in the NHIS.

In addition, students can freely utilize the gym, health clinic, and other facilities available at HUFS. They can also access counseling services provided by the Student Counseling Center in various languages, including Korean, English, and Chinese.

Students from CKLC participated in making this brochure.



한국외국어대학교
한국어문화교육원
 CENTER FOR KOREAN LANGUAGE & CULTURE
 HANKUK UNIVERSITY OF FOREIGN STUDIES

Center for Korean Language and Culture
 #101, Foreign Language Training and Testing Center,
 Hankuk University of Foreign Studies,
 107 Imun-ro, Dongdaemun-gu,
 Seoul, Republic of Korea (02450)



CKLC website



Application
 website



[China / Rest of Asia]
 (excluding Japan and Central Asia)
 +82-(0)2-2173-3385
 [Japan, Central Asia, All other countries]
 +82-(0)2-2173-2307



[China / Rest of Asia]
 (excluding Japan and Central Asia)
 korean1@hufs.ac.kr
 [Japan, Central Asia, All other countries]
 korean2@hufs.ac.kr



www.korean.ac.kr



@cklc_hufs